



Cim50 Manufacturing

Sage Accredited Manufacturing Solution for Sage 50

Cim50
manufacturing

Cim50 - Desk 4U

File View Settings Tools Help

New Amend View Copy Trial Kitting Max. B

Columns Filter Quick Search

| Bom Reference | Description | Type |
|---------------|--------------------------------|------------|
| DRAW/M | Drawset - Mahogany | Sub-Assem |
| | Drawset - Oak | Sub-Assem |
| | Drawset - Pine | Sub-Assem |
| | Drawset - Teak | Sub-Assem |
| | Drawset - Walnut | Sub-Assem |
| | Universal Plywood Drawer Base | Sub-Assem |
| | Desk Leg Assembly | Sub-Assem |
| | Office Desk - Mahogany | Finished G |
| | Executive Desk - Mahogany | Finished G |
| | Office Desk - Oak | Finished G |
| | Executive Desk - Oak | Finished G |
| | Office Desk - Pine | Finished G |
| | Executive Desk - Pine | Finished G |
| | Small Business Customised Pack | Finished G |
| | Office Desk - Teak | Finished G |
| | Desktop - Mahogany | Sub-Assem |
| | Desktop - Oak | Sub-Assem |
| | Desktop - Pine | Sub-Assem |
| | Desktop - Teak | Sub-Assem |
| | Desktop - Walnut | Sub-Assem |
| | Executive Desk - Walnut | Finished G |
| | Office Desk - Walnut | Finished G |

Swap Clear Refresh Ex

Shop Floor Data Capture

Cim50 manufacturing

Company: Desks 4U Limited v2023
Current User: Martin Conner

Shop Floor Data Capture
Version: 2023.1.0.0

Stocktake

Stock Code: TIMB/OAK

Description: Timber - Oak Veneer - 6 metre

Batch Number: TO-0057

Location: C6

Expected Quantity: N/A

Count Qty: 21

Additional Info

Order Reference: 12 Date Received: 06/03/2023

Account Reference: 1041 Sell By Date: 06/03/2023

Account Name: The Local Timber Co. Ltd. Use By Date: 06/03/2023

Supplier Batch: 1846316-2023

Supplier Certificate:

Notes:

Confirm Cancel

The
tools...

you need to help
run...

your manufacturing
business.

Contents

| | |
|---|----|
| Introduction to CIM Software | 4 |
| Cim50 | 5 |
| Modules | 7 |
| Stock Control – Easily control your stock. | 8 |
| Bill of Materials – Configure your built items. | 11 |
| Works Orders – Manage your production. | 15 |
| Planning – Despatch in time. | 18 |
| Quotations – Power quotations module. | 21 |
| SFDC – Shop floor data capture. | 24 |
| Dashboards – Interrogate your data. | 28 |
| Carbon Footprint – Collate and offset | 31 |

Introduction to CIM

CIM Software Ltd is a complete IT solution provider and Sage Business Partner, trusted for over 30 years to deliver simple, effective IT solutions to more than 250 SME customers across the UK and worldwide.

We are an award-winning Sage Business Partner, specialising in Sage Accounts and Manufacturing Solutions including Sage 50, Sage 200, Infor: Swan, Sage CRM, and now Cim50.

Having worked with, and implemented Sage software since 1991, we understand the various challenges that businesses face when trying to make their IT solutions work for them.

We have an experienced, dedicated, and approachable team who can offer a complete range of services to help guide your business through implementing a new IT system.

Developing and improving an existing system, to providing day-to-day technical support to ensure you are getting the most from your chosen business solution.



Cim50

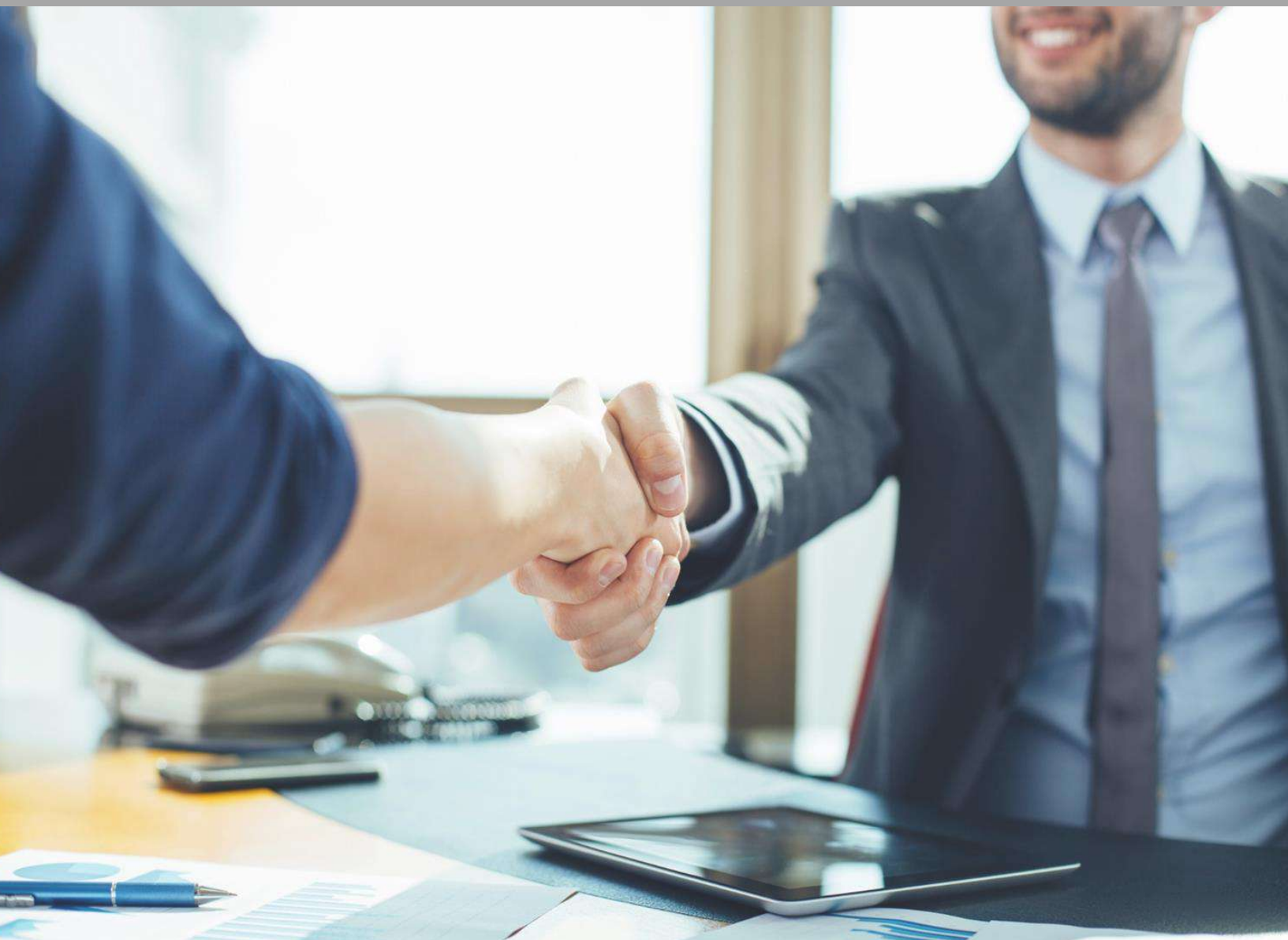
Cim50 is a modular system that provides you with all the tools you need to manage your business.

Whether you are looking for enhanced Stock Control to go beyond the capabilities of Sage 50 Accounts, or are looking for a complete Manufacturing package to control all aspects of your business, Cim50 is a revolutionary new product that gives you the control and confidence you need from your business-critical software.

We have combined our 120+ years' worth of manufacturing industry leading experience and knowledge to produce our own cutting-edge software solution that integrates with Sage 50 Accounts.

When designing our software, we followed several key philosophies to ensure Cim50 is familiar to customers who use Sage 50 Accounts or have used Sage 50 Manufacturing. We focused on ensuring that Cim50 is easy to use, with a modern user interface, whilst providing powerful functionality and clear, easy to understand reporting.

We have listened to all comments and feedback received from customers and business partners, to produce a solution that will improve data management and processing for all.



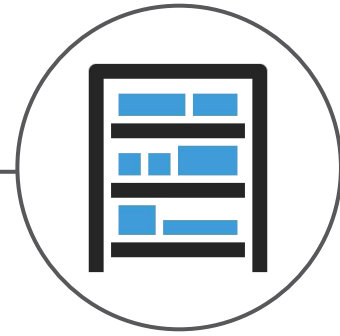
integrates with...

Sage 50

...for enhanced
functionality.

Modules

Stock Control



Bill of Materials



Works Orders



Planning



Quotations



SFDC





Stock Control

Easily control your stock

...with Cim50 Stock Control; combined with the Sage 50 Stock module, track and maintain the items you sell, buy or manufacture.

Take advantage of this module, to utilise traceability, quarantine, and the ability to amend sales order despatches or purchase order receipts.

Traceability

Track all serial numbers & batch movements showing a detailed costing breakdown and history.

Quarantine

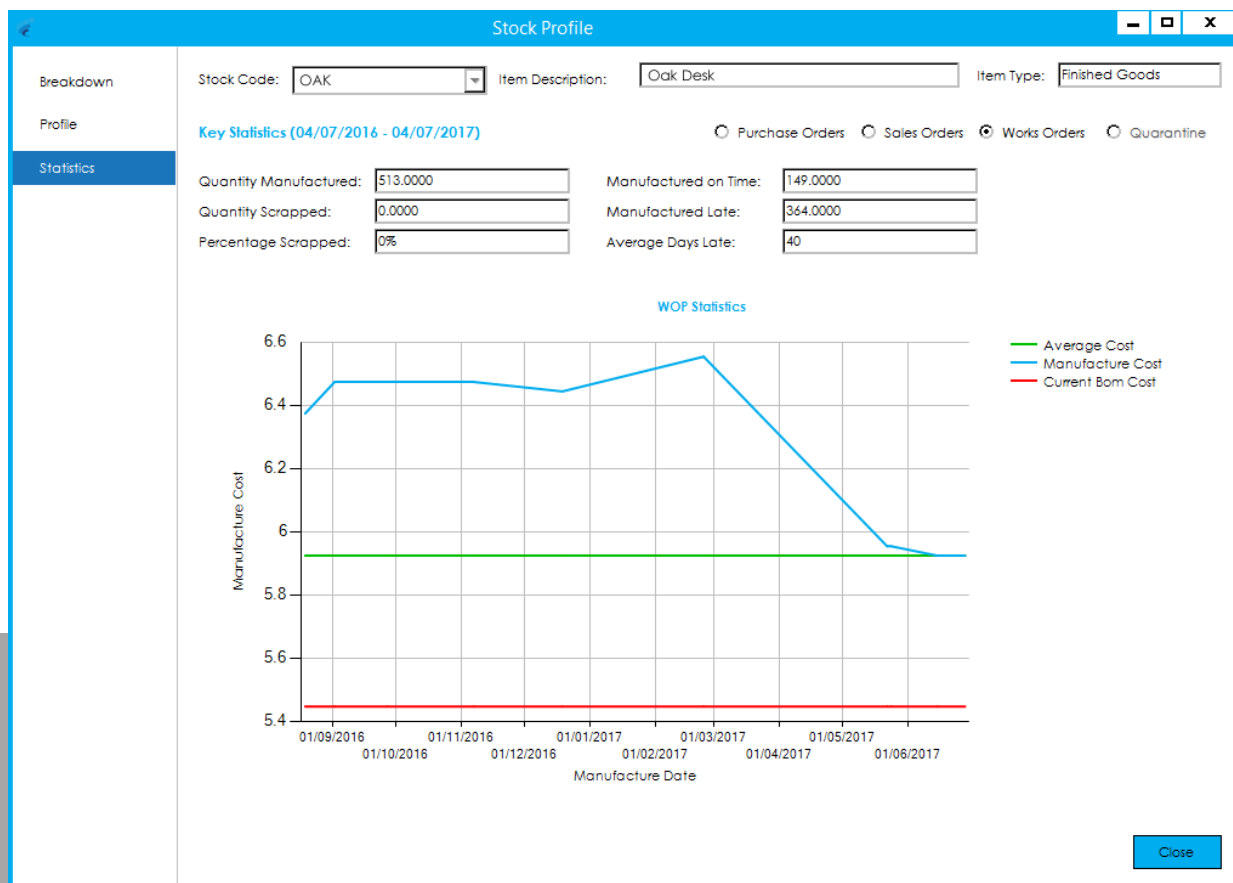
Book items into quarantine when receiving goods, completing a works order or manually transfer at any time.

Stocktake

Advanced stocktaking for batch and serial numbers, with the facility to halt all stock transactions for items being counted.

Despatch/Receipt

Despatch or receive goods from within Stock Control with the ability to capture packing information. If you've despatched the wrong item, or received the wrong quantity, simply amend accordingly.



Key Statistics

Monitor key indicators for your stock, including supplier and despatch performance with cost variances, in one easy to view enquiry.

Analysis Codes

Up to 20 analysis codes can be setup to suit your business requirements, used by the advanced filtering and search facility throughout Cim50.

Stock Control Settings

Stock Settings

Traceability

Stock Analysis

Traceable Analysis

Units

Stock Analysis

Important Note: You have 20 analysis codes available. Once an analysis code has been set, it cannot be changed from within the system. Please contact CIM Software Support should you require assistance.

| No. | Analysis Code Name | Type |
|-----|--------------------|----------|
| 1 | Furniture Range | Text |
| 2 | Offer Code | Numeric |
| 3 | Offer Expiry | DateTime |
| 4 | Signed off | Boolean |
| 5 | | |
| 6 | | |
| 7 | | |
| 8 | | |
| 9 | | |
| 10 | | |
| 11 | | |
| 12 | | |
| 13 | | |
| 14 | | |

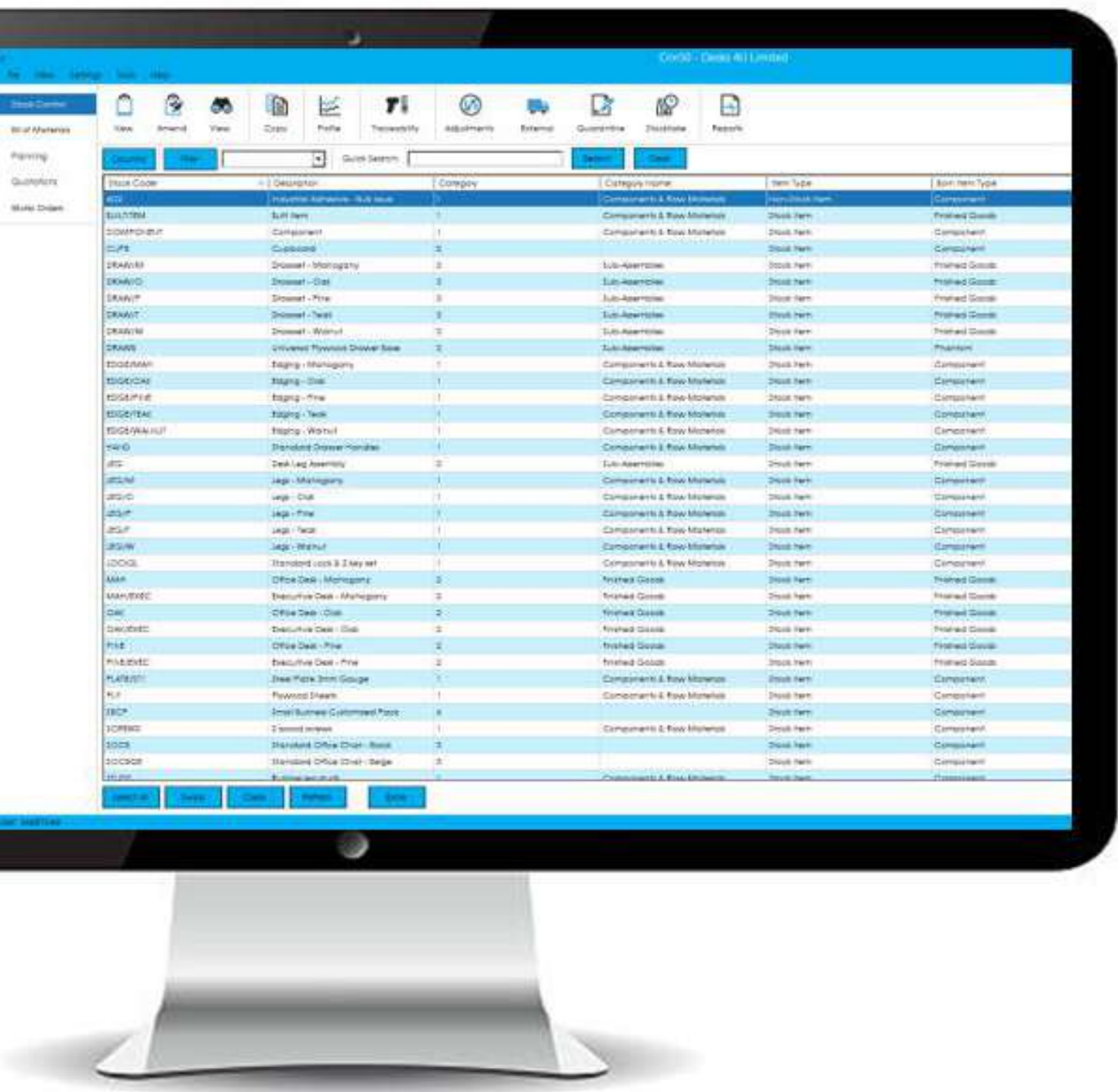
[Save](#) [Cancel](#)

Audit Log

Check for amendments to stock records within the audit log, tracking any changes made and by whom.

User Interface

Cim50 Stock Control provides you with current functionality of Sage 50 Accounts, with enhanced features from Cim50, within one easy to use interface.



...one **easy to use** interface.



Bill of Materials

Configure your built items

...with Cim50 Bill of Materials. This module offers the flexibility to choose what is right for your business, depending on your manufacturing requirements.

This enhanced module includes multi-level bill of materials, an audit log to track every change made, and an ongoing costing history; capturing material, labour and machine overheads.



Costing History

Ongoing costing history gives you the confidence that your build and purchase costs are accurate, capturing material, labour and machine overheads.



Trial Kitting

Allows you to raise works orders and purchase orders for several jobs, ensuring manufacturing and purchasing costs are most efficient.



Reverse Build

Explode your components back into stock with accurate costs using the reverse build option.



Operation Components

Assign components to relevant operations and print on the appropriate paperwork to ensure components are only allocated when needed.

Amend Bill of Material - DRAW/M

Main Details

Components

Operations

Documents

Costing

Analysis

Audit Log

Bom Reference:

DRAW/M

Bom Description:

Drawset - Mahogany

Components

| Seq. | Stock Code | Description | Quantity | Unit |
|-------|------------|------------------------------------|----------|---------|
| 5.00 | DRAWB | Universal Plywood Drawer Base | 6.00 | Each |
| 10.00 | HAND | Standard Drawer Handles | 0.60 | Each |
| 15.00 | TIMB/MAH | Timber - Mahogany Veneer - 6 Metre | 1.50 | Each |
| 20.00 | LOCK2L | Standard Lock & 2 key set | 1.00 | Each |
| 30.00 | AD2 | Industrial Adhesive - Bulk Issue | 1.00 | 5 litre |
| 40.00 | TUBE/ST1 | Steel Tube 25mm Dia | 1.00 | Metre |

Resequence

Add

Remove

View Stock Record

Edit Sub-Assembly

Components

Finished Goods

Phantom

Sub-Assy

Additional Component Settings

In Progress:

Scrap Percent:

0.00

Manufacturing Instruction:

Slot into groove

Fixed Quantity:

Reference:

Bulk Issue:

Operation:

Save

Cancel

Operation Times

Operation times in hours, minutes and seconds, easier access to operation and component setup with multiple subcontract suppliers.

Amend Bill of Material - DRAW/M

Main Details

Components

Operations

Documents

Costing

Analysis

Audit Log

Bom Reference:

DRAW/M

Bom Description:

Drawset - Mahogany

Operations

| Seq. | Reference | Description | Type |
|-------|-----------|---------------------------------------|-------------|
| 5.00 | CUT | Cut Timber | Standard |
| 15.00 | DRILL | Drill holes for handles | Standard |
| 20.00 | FIX | Fit standard drawer handles and locks | Standard |
| 23.00 | DRAWASS | Drawer Assembly & Finish | Standard |
| 33.00 | SUB CON | Sub contract Varnish | Subcontract |

Resequence

Operation Details

Details

Setup

Labour

Machine

Tooling

Manufacturing Instructions

Other

Qty Per Run:

1.00

Run Time:

0

h

5

m

0

s

Delay Time:

0

h

0

m

0

s

Update Resource Details

Save

Cancel

12



Analysis Codes

20 analysis codes can be setup to help categorise your bill of materials, used by the advanced filtering and search facility throughout Cim50.



Audit Log

Ensure your bill of materials are accurate and check for amendments with the audit log, tracking any changes made and by whom.



...control your built items.

simple...

...and effective solution...

designed...

...with you in mind...



Works Orders

Manage your production

...with Cim50 Works Orders. This module allows you to follow the 'build' on the shop floor, with amendable documentation, detailing the quantities of components required, which operations are needed and when.

This enhanced module allows you to raise, progress and track your works orders throughout the entire production process. Providing easy interfaces and enquiry screens to allow you to have confidence that your jobs are being completed on time, on spec, and within budget.

An advanced subcontracting module allows you to control all subcontract processes. Capacity planning allows you to control your in-house resources as needed, and powerful component control allows you to reserve component stock for jobs, including batch or serial numbers.

Amend Works Order - WO0013

Works Order Reference: WO0013

Main Details

Links

Memo

Components

Routing

Subcontracting

Costing

Documents

Analysis

Audit Log

Works Order Details

Bom Reference: DRAW/M Status: Entered

Description: Drawset - Mahogany

Qty Required: 1.00 Unit: Each

Qty Outstanding: 1.00

Qty Scrapped: 0.00

Qty Complete: 0.00

Revision: 2

Quality Standard: ISO9002

Project Number: Works Number:

Salesperson: WIP Nominal Code:

Dates

Created: 03/07/2017

Due Date: 03/07/2017

Safety Due Date: 01/07/2017

Start Date: 03/07/2017

End Date: 03/07/2017

Last Completed:

Material Overhead: 0.00 %

Labour Overhead: 0.00 %

Machine Overhead: 0.00 %

Instructions

Manufacturing Instructions:

Wear gloves handling

Product Image

Planning

Include in MRP Demand: ☒

Include in MRP Replenishment: ☒

Exclude from Stock Profile: ☐

Save Cancel

Improve cash flow

Assign components to specific operations, which in turn, will have their own due dates. Only buy stock when you need it, easing warehouse space.

Manage your resources

Record labour bookings against your jobs, either by employee or works order and check the available capacities of your labour and machine resources.

Sub Contract

Raise purchase orders, despatch the goods to your sub contract supplier and receive them back within one easy to use screen.

Reduce costs and delivery times

Capture every amendment to your works order with the audit log, ensuring your data is accurate and your costs are correct.

Archive

Keep a full history of all your works orders, but keep your 'live' orders to a minimum.

Linking

Raise orders for parent works orders or multiple sales orders with the 'Link' functionality.

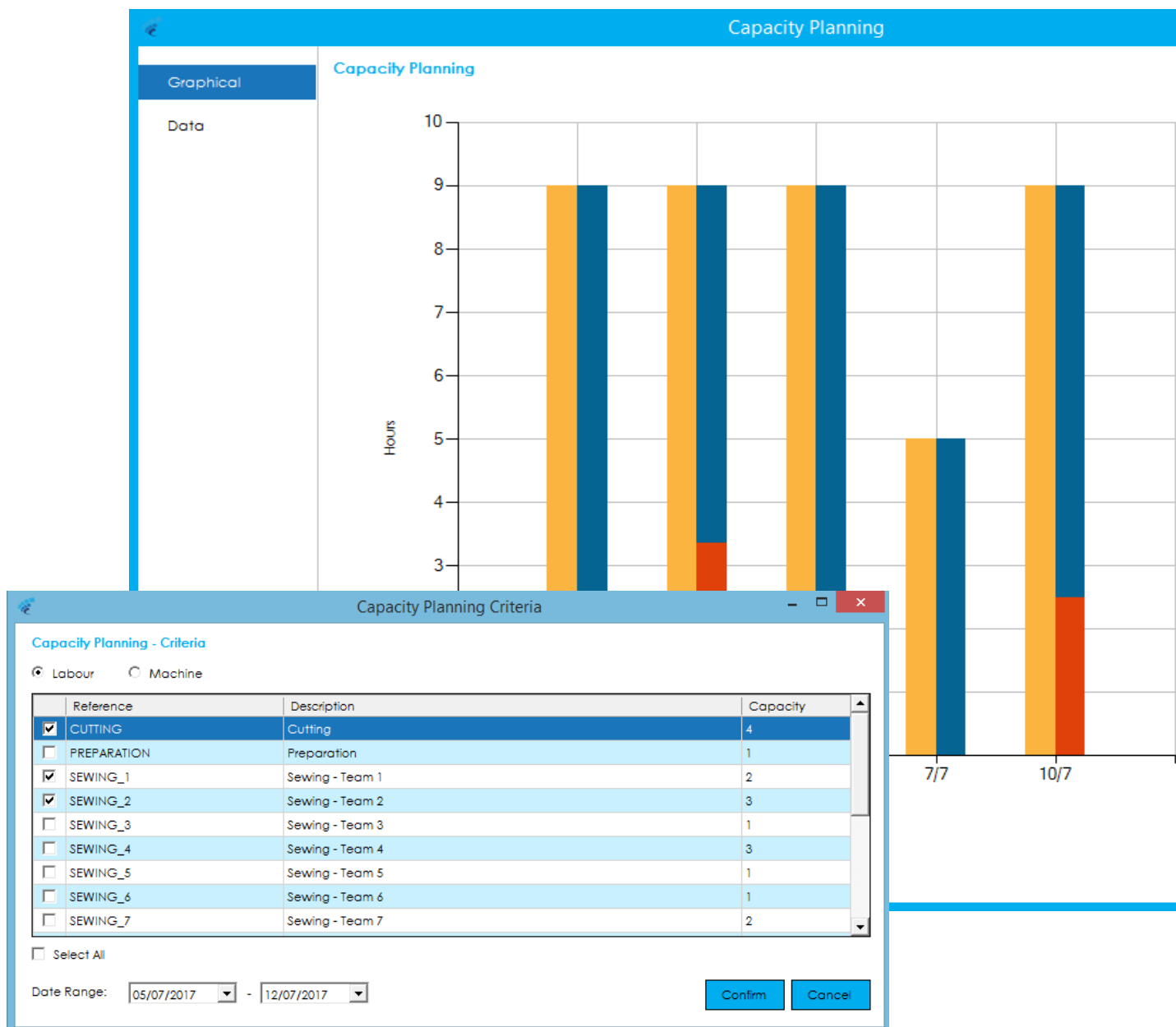
Detailed Costing History

View the current costs of your works order through the detailed costing enquiry, broken down by material, labour, overheads with an expected costs comparison.

Rough Cut Capacity Planning

Keep an eye on your shop floor loading with this simple enquiry, detailing the hours required and used for your labour and machines.

Export to excel for data manipulation.



...manage your shop floor.

Planning

Despatch in time

...with Cim50 Planning. This module is key to controlling your stock and ensuring goods are manufactured in time to despatch to your customers.

Recommend purchase orders and works orders based on current demand held within Sage 50 and Cim50. Read from sales orders, sales forecasts, works orders and make to stock items. Or, simply ensure that your stock levels are at the reorder level set against the stock record.

Cim50 - Demo

File View Settings Tools Help

Stock Control
Bill of Materials
Planning
Quotations
Works Orders

Demand Schedule Read Linking MRP Lists Run Process View Make for Stock Sales Forecasts Reports

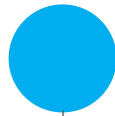
Columns Filter Quick Search: Search Clear Current View: Recommendations

MRP Recommendations (Last Run: 12/07/2017 08:41)

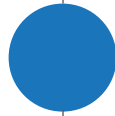
| Rec. Reference | Parent Tag | Stock Code | Description | Type | Demand Date | Order Date | Receipt Date | Demand Quantity | Rec. Order Qty | Supplier | Supplier Name | Lead Time | Order Reference | Action | Status |
|----------------|------------|------------|------------------------------------|-------------|-------------|------------|--------------|-----------------|----------------|----------|----------------------------|-----------|-----------------|--------|-----------------|
| REC0000001 | SO - 12 | MAH | Office Desk - Mahogany | Manufacture | 13/07/2017 | 12/07/2017 | 13/07/2017 | 25.00 | 50.00 | | | 0 | | New | Awaiting Action |
| REC0000002 | SO - 6 | OAK | Office Desk - Oak | Manufacture | 24/07/2017 | 18/07/2017 | 21/07/2017 | 37.00 | 100.00 | | | 0 | | New | Awaiting Action |
| REC0000003 | Multiple | PINE | Office Desk - Pine | Manufacture | 19/07/2017 | 14/07/2017 | 18/07/2017 | 100.00 | 100.00 | | | 0 | | New | Awaiting Action |
| REC0000004 | Multiple | TEAK | Office Desk - Teak | Manufacture | 01/08/2017 | 27/07/2017 | 31/07/2017 | 100.00 | 100.00 | | | 0 | | New | Awaiting Action |
| REC0000005 | SO - 5 | TEAK | Office Desk - Teak | Manufacture | 08/08/2017 | 03/08/2017 | 07/08/2017 | 90.00 | 100.00 | | | 0 | | New | Awaiting Action |
| REC0000006 | SO - 12 | DRAW/M | Drawset - Mahogany | Manufacture | 12/07/2017 | 12/07/2017 | 13/07/2017 | 50.00 | 100.00 | | | 0 | | New | Awaiting Action |
| REC0000007 | Multiple | DRAW/P | Drawset - Pine | Manufacture | 18/07/2017 | 14/07/2017 | 17/07/2017 | 100.00 | 100.00 | | | 0 | | New | Awaiting Action |
| REC0000008 | SO - 5 | DRAW/T | Drawset - Teak | Manufacture | 07/08/2017 | 03/08/2017 | 04/08/2017 | 100.00 | 100.00 | | | 0 | | New | Awaiting Action |
| REC0000009 | Multiple | LEG | Desk Leg Assembly | Manufacture | 18/07/2017 | 12/07/2017 | 19/07/2017 | 800.00 | 250.00 | | | 0 | | New | Awaiting Action |
| REC0000010 | Multiple | LEG | Desk Leg Assembly | Manufacture | 31/07/2017 | 21/07/2017 | 28/07/2017 | 400.00 | 250.00 | | | 0 | | New | Awaiting Action |
| REC0000011 | SO - 5 | LEG | Desk Leg Assembly | Manufacture | 07/08/2017 | 26/07/2017 | 04/08/2017 | 400.00 | 400.00 | | | 0 | | New | Awaiting Action |
| REC0000012 | Multiple | TOP/P | Desktop - Pine | Manufacture | 18/07/2017 | 13/07/2017 | 17/07/2017 | 100.00 | 95.00 | | | 0 | | New | Awaiting Action |
| REC0000013 | Multiple | AD2 | Industrial Adhesive - Bulk Issue | Purchase | 17/07/2017 | 14/07/2017 | 14/07/2017 | 0.19 | 25.00 | 1051 | Superior Castings Ltd | 0 | | New | Awaiting Action |
| REC0000014 | Multiple | LOCK2L | Standard Lock & 2 key set | Purchase | 12/07/2017 | 12/07/2017 | 17/07/2017 | 220.00 | 110.00 | 3052 | Wedgwood Marshall & Wilson | 5 | | New | Awaiting Action |
| REC0000015 | SO - 5 | LOCK2L | Standard Lock & 2 key set | Purchase | 04/08/2017 | 28/07/2017 | 03/08/2017 | 100.00 | 100.00 | 3052 | Wedgwood Marshall & Wilson | 5 | | New | Awaiting Action |
| REC0000016 | SO - 12 | TIMS/MAH | Timber - Mahogany Veneer - 6 Metre | Purchase | 12/07/2017 | 12/07/2017 | 01/08/2017 | 180.00 | 148.00 | 8U1001 | Bulden Supplies Ltd | 20 | | New | Awaiting Action |
| REC0000017 | Multiple | TUBE/ST1 | Steel Tube 25mm Dia | Purchase | 17/07/2017 | 12/07/2017 | 14/07/2017 | 500.00 | 200.00 | 1051 | Superior Castings Ltd | 2 | | New | Awaiting Action |
| REC0000018 | Multiple | TUBE/ST1 | Steel Tube 25mm Dia | Purchase | 28/07/2017 | 25/07/2017 | 27/07/2017 | 500.00 | 500.00 | 1051 | Superior Castings Ltd | 2 | | New | Awaiting Action |
| REC0000019 | SO - 5 | TUBE/ST1 | Steel Tube 25mm Dia | Purchase | 04/08/2017 | 01/08/2017 | 03/08/2017 | 800.00 | 800.00 | 1051 | Superior Castings Ltd | 2 | | New | Awaiting Action |

Select All Swap Clear Refresh Excel

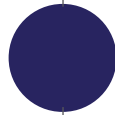
User: MRP100M



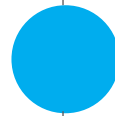
Reads demand from sales orders, sales forecasts, works orders and make to stock items.



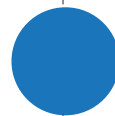
Maintains stock levels based on reorder levels, maximum stock level and other settings within the stock record.



Action combined or single recommendations to raise purchase orders and works orders.



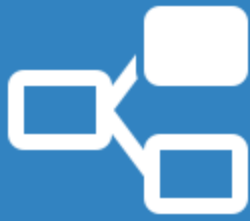
Suggests cancelling or rescheduling orders that are no longer required or can be used to satisfy other demand.



Automate both MPS and MRP at a convenient time for your business, with user specified default settings.



Easy to read output logs detailing reasons for recommendations, with historic logs.



Jobbing or Batch

Items can be configured as either Batch or Jobbing, determining how MRP will treat demand for that item.



Forecast

Raise sales forecasts by day, week or month, to ensure you have sufficient stock to satisfy your expected order book.

New Sales Forecast

Forecast Details

New Sales Forecast

Reference:

Start Date:

End Date:

Frequency:

Status:

Customer Specific: ☒

Customer Ref:

Customer Name:

Forecast Items

| Stock Code | Description | Item Type | Forecast Total | Unit of Measure | 04/07/2017 | 05/07/2017 |
|------------|------------------------|----------------|----------------|-----------------|------------|------------|
| OAK | Office Desk - Oak | Finished Goods | 524.00 | Each | 2.00 | 2.00 |
| MAH | Office Desk - Mahogany | Finished Goods | 1,048.00 | Each | 4.00 | 4.00 |
| | | | | | | |

Forecast Notes

Demo Forecast

...take **control** of production.



Quotations

Manage your sales

...with Cim50 Quotations. This module allows you to create quotations for manufactured items, configuring them from within the record itself, including non-stock items.

Define multiple price breaks with automatic cost calculation, raise sales, purchase and works orders from within your quote and setup repeat service and miscellaneous items.



Setup Repeat Items

Ability to set up service and miscellaneous items on your quotes for repeat use.



Flexible Pricing

Calculate sales prices based on cost mark-up, profit margin or on a fixed priced basis, giving you flexibility to price your quotes the way you need to.

Quotation Settings

Quote Settings

Quote Analysis

Item Analysis

Service Items

Service Items

| Type | Description | Unit Cost | Unit Price |
|--------------|-------------------|-----------|------------|
| Installation | Install Charges | 12.50000 | 35.00000 |
| Training | Training Charges | 12.50000 | 35.00000 |
| Carriage | Carriage Charges | 5.00000 | 10.00000 |
| Insurance | Insurance Charges | 5.00000 | 10.00000 |
| Demo | Demo Charge | 50.00000 | 99.99000 |
| Admin Charge | Admin Charge | 5.00000 | 10.00000 |

Add

Edit

Remove

Save

Edit Quotation Service Item

Quotation Service Item

Type:

Admin Charge

Description:

Admin Charge

Default Unit Cost:

5.00000

Default Unit Price:

10.00000

Save

Close



Raise Orders

Once a quote has been accepted, you can move onto the next step, by raising sales, purchase and works orders directly from within your quote. Or, just convert the quote to a sales order and let the Cim50 Planning module take care of the rest.

Quotation QUO00031 - Orders

Quotation

Quote Reference:

QUO00031

Customer:

AD01 - ADVANCED SECURITY PROTECTION

Quotation Date:

06/07/2017

Current Status:

Entered

Order Type

☒ Sales Order

☐ Works Order(s)

☐ Purchase Order(s)

Create New Sales Order

Order Number:

<Auto Number>

Order Date:

06/07/2017

Customer PO:

Due Date:

06/07/2017

Type:

☒ Sales Order
 ☐ Proforma Order

| No. | Product Code | Description | Quantity | Unit Price | Line Value |
|-----|--------------|--------------------|----------|------------|------------|
| 1 | 1002/59/1 | SIDEWINDER HOLSTER | 1.0000 | 0.00000 | 0.00000 |

Net Discount to Apply:

0.00000

%

or

0.00000

Create

Cancel



Detailed Profit and Loss Analysis

Broken down by material, labour, machine, overheads and subcontract costs. Cim50 Quotations module gives you full visibility of your costs, revenue and expected profit margin.

| Item | Description | Cost | Revenue |
|---------------------------|-------------------|------------------|---------|
| Product Cost Items | | | |
| Materials | Material Costs | 101.00000 | |
| Labour | Labour Costs | 23.00000 | |
| Setup | Setup Costs | 50.00000 | |
| Machine | Machine Costs | 0.00000 | |
| Tooling | Tooling Costs | 0.00000 | |
| Subcontract | Subcontract Costs | 0.00000 | |
| Overheads | Overhead Costs | 6.20000 | |
| Sub-Total | | 180.20000 | |
| Service Cost Items | | | |
| Admin Charge | Admin Charge | 0.00000 | |
| Carriage | Carriage Charges | 0.00000 | |
| Demo | Demo Charge | 0.00000 | |
| Installation | Install Charges | 0.00000 | |
| Insurance | Insurance Charges | 0.00000 | |
| Training | Training Charges | 100.00000 | |
| Sub-Total | | 100.00000 | |
| TOTAL COSTS | | 280.20000 | |
| Product Revenue | | | |

...raise price quote.



Shop Floor Data Capture

Process stock movements

...with Cim50 Shop Floor Data Capture. This module allows you to process stock transactions from the convenience of a handheld tablet or workshop PC.

Utilise the power of barcode scanning to streamline your production processes, stocktaking and resource management.

Stock Control Functionality



Stock Transfer – process stock location transfers.



Quarantine – process quarantine inspection against products, releasing to stock or rejecting for supplier return/in house re-work.



Purchase Orders – generate purchase orders simply by scanning items that you require in your workshop.



Goods Despatch – pick and pack items for despatch, then process and generate a delivery note.



Goods Receipt – process goods received, scan your received item barcodes to automatically book them in to stock.



Stocktake – undertake planned or impromptu stock counts, with count figures being either automatically uploaded or held for sign off at the end of the stock take.

Shop Floor Data Capture

Company: Desk 4U Limited
Current User: Joe Bloggs

Shop Floor Data Capture
Version: 2021.2.0.0

Stocktake

| | | | |
|--------------------|--|--|--|
| Stock Code: | <input type="text" value="LEG"/> | | |
| Description: | <input type="text" value="Desk Leg Assembly"/> | | |
| Batch Number: | <input type="text" value="GRN0041"/> | | |
| Location: | <input type="text" value="S15"/> | | |
| Expected Quantity: | <input type="text" value="10.00"/> | | |
| Count Qty: | <input type="text"/> | | |

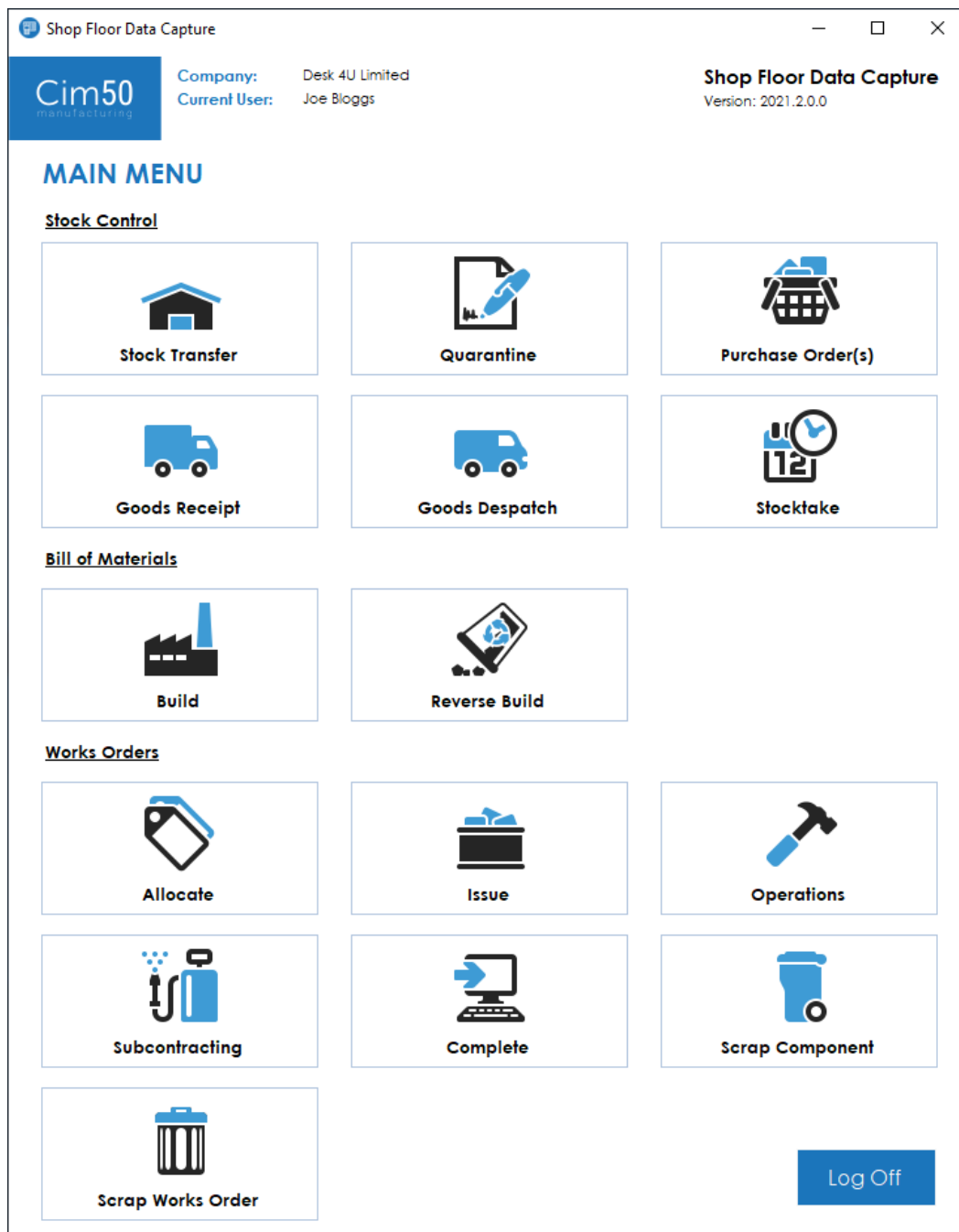
Additional Info

| | | | |
|-----------------------|--|----------------|---|
| Order Reference: | <input type="text"/> | Date Received: | <input type="text" value="08/03/2021"/> |
| Account Reference: | <input type="text"/> | Sell By Date: | <input type="text" value="08/03/2021"/> |
| Account Name: | <input type="text"/> | Use By Date: | <input type="text" value="08/03/2021"/> |
| Supplier Batch: | <input type="text" value="N/A"/> | | |
| Supplier Certificate: | <input type="text" value="321368"/> | | |
| Notes: | <input type="text" value="Inspected 08/03/2021 - JB"/> | | |

Confirm

Cancel

...quick stock movements.



Bill of Material Functionality



Build – process BOM builds, scanning out component stock and adjusting in finished items.



Reverse Build – process a BOM reverse build.





Dashboards

Interrogate your data

...with Cim50 Dashboards. Collaborating with your existing modules, Dashboard takes a snapshot of your data, allowing you to access, interact and analyse up-to-date information, making smarter, data driven decisions.

Utilise the power of Dashboards to get complete visibility of your stock and production information. All dashboards are drillable and provide the option to look back at previous snapshots, to interrogate historical data at any time.

Stock Valuation

Displays stock valuation by stock category or sell by date in the form of a pie chart.

Aged Stock Valuation

Displays value of stock based on when it was last used.

Best and Worst Performing Suppliers

Displays the top 10 best and worst performing suppliers in the last 12 months, based on delivery performance.

Last Movement Dates

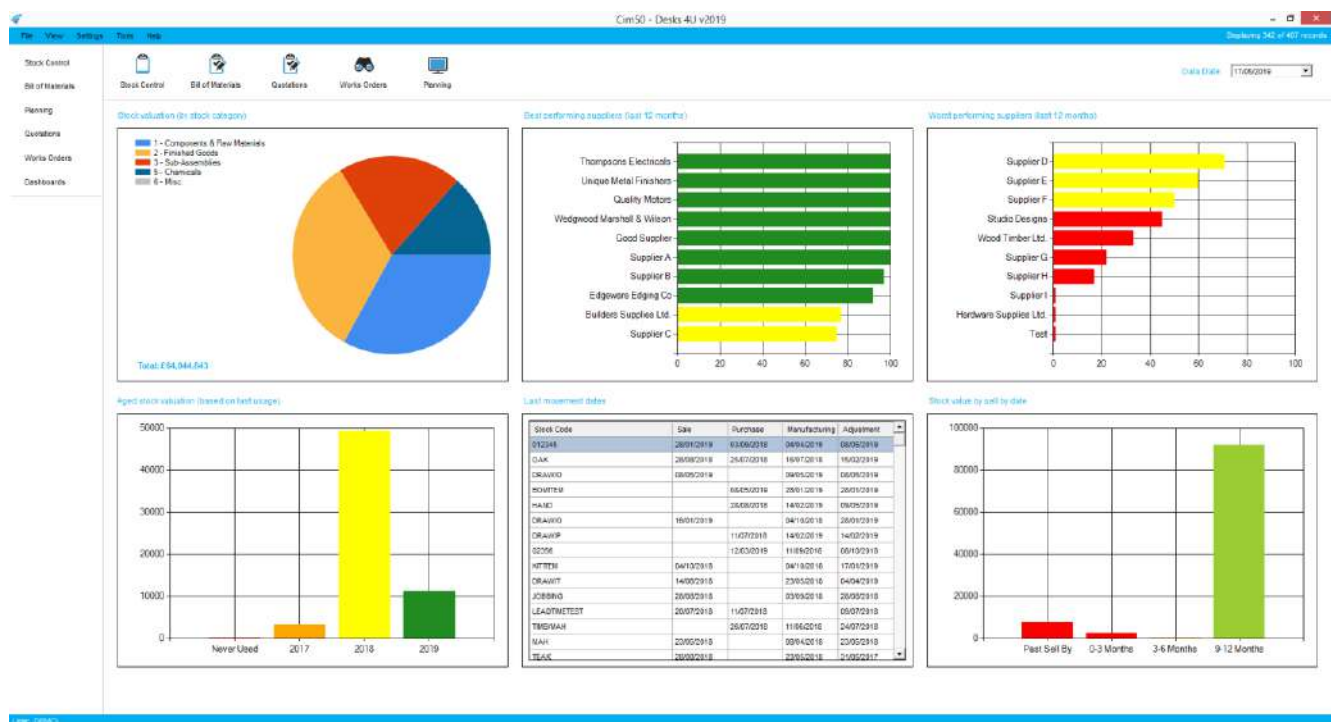
Displays last movement dates for key transaction types in Cim50, such as goods received and goods despatched.

Works Order Completions

Displays a graph showing the quantity completed on time, quantity completed late and quantity scrapped per month.

WIP Valuation Breakdown

Displays a pie chart detailing a breakdown of the WIP valuation by Material, Labour, Machine, Setup, Tooling, Subcontracting and Overheads.



Completion Costing Variance

Displays a list of works orders completed in the last month where the actual cost was higher than the expected cost.

Overdue Works Orders

Displays a list of overdue works orders.

Action Quotation Profitability

Displays a list of active quotes ranked by profitability.

Quote Conversion Statistics

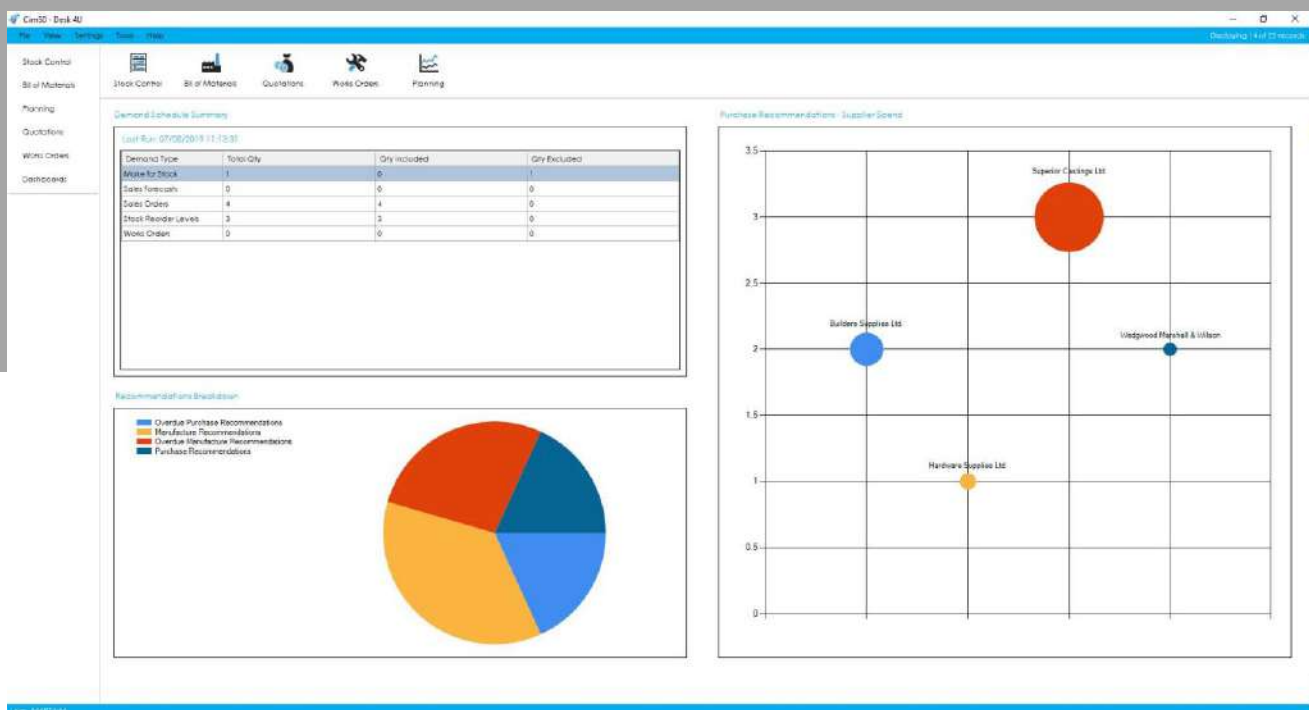
Displays a graph detailing the number of quotes raised, won and lost each month.

Bill of Materials - Costings

Displays a list of BOMs where the cost price or suggested selling price is higher than the standard selling price.

Bill of Materials - Volume and Value

Displays a graph detailing build volume (quantity) and value broken down by week number.



Planning Recommendation Statistics

Displays a pie chart showing the breakdown of purchase / manufacturing recommendations and those that are overdue.

Demand Schedule Summary

Displays a live breakdown of the makeup of the last demand schedule run.

Recommended Supplier Spend

Displays a bubble graph detailing the number and value of orders that are recommended to be placed with suppliers.



Carbon Footprint

Calculate and offset

...your Carbon Footprint using a unique set of features within Cim50.

Many studies have shown that most businesses are not aware of how much carbon they produce. In 2021 the government called on small businesses to lead the charge in reducing their Carbon Footprint and set out a target to reach net zero emissions by 2050.

A carbon footprint is the total greenhouse gas emissions caused by an individual, event, organisation, service, place, or product, expressed as carbon dioxide equivalent.

Whilst that provides you with a brief definition of what it is, it doesn't tell you why it is important and why you should care about it.

The importance of Carbon Footprint

The best way to tackle climate change is to reduce your carbon footprint by taking your everyday carbon emissions into consideration. This means that you can increase or decrease your carbon footprint with your everyday choices.

The ultimate goal is to become 'Carbon Neutral', which is where your carbon output is effectively reduced to zero, by offsetting your carbon usage.

Calculating Carbon Footprint with Cim50

Following the government announcement, we have included a unique set of features that allows you to calculate the Carbon Footprint for your manufactured products.

Cim50 allows you to calculate the carbon emissions generated from your manufacturing processes through two different modes.

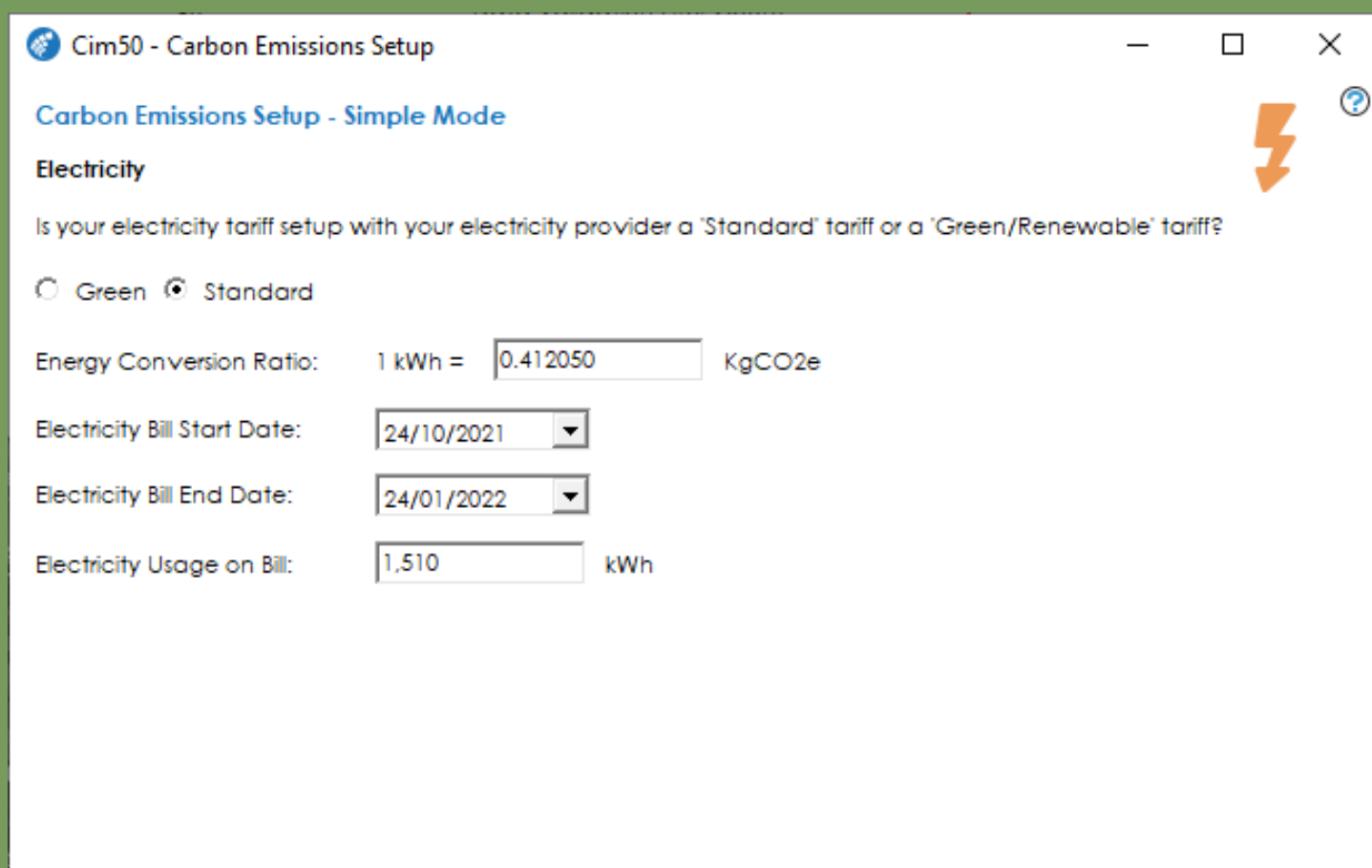
Both calculations ultimately result in a 'Carbon Cost' defined in KgCO₂e (Kilograms of CO₂ equivalent) which is calculated when a works order is completed.

You can interrogate your carbon emissions produced during a certain period allowing you to implement changes into your manufacturing processes.

Simple Mode


To calculate your carbon footprint in simple capture mode, all you need are your fuel bills. Tell Cim50 what types of fuel you are using as a business, how much you are using, and over what period of time.

Using the carbon footprint of your purchased items, as detailed from your suppliers, along with your production output, Cim50 will calculate the carbon cost for your manufactured items.





The screenshot shows a software window titled "Cim50 - Carbon Emissions Setup" with standard window controls (minimize, maximize, close) in the top right. Below the title bar, the text "Carbon Emissions Setup - Simple Mode" is displayed in blue. On the right side of the window, there is an orange lightning bolt icon and a help icon (a question mark inside a circle). The main content area is titled "Electricity" and contains the following elements:

- A question: "Is your electricity tariff setup with your electricity provider a 'Standard' tariff or a 'Green/Renewable' tariff?"
- Two radio buttons: "Green" (unselected) and "Standard" (selected).
- A label "Energy Conversion Ratio:" followed by the text "1 kWh =", a text input field containing "0.412050", and the unit "KgCO₂e".
- A label "Electricity Bill Start Date:" followed by a date picker showing "24/10/2021".
- A label "Electricity Bill End Date:" followed by a date picker showing "24/01/2022".
- A label "Electricity Usage on Bill:" followed by a text input field containing "1,510" and the unit "kWh".


Cim50 - Carbon Emissions Setup

Carbon Emissions Setup - Simple Mode

Summary

Calculation Period: 24/10/2021 - 24/01/2022

Using the data provided, your calculated annual CO₂e emissions are:

| Item | Annual Emissions (Kg CO ₂ e) | Estimated Offset Cost (£) |
|--------------------|---|---------------------------|
| Electricity | 2,468 | 19.75 |
| Gas | 2,811 | 22.48 |
| Wood Pellets | 13,219 | 105.75 |
| | | |
| Electric Cars | 0 | 0.00 |
| Petrol Cars | 28,000 | 224.00 |
| Medium/Large Vans | 38,080 | 304.64 |
| 7.5t - 12t Lorries | 68,800 | 550.40 |
| 12t - 26t Lorries | 112,000 | 896.00 |
| | | |
| TOTAL | 265,378 | 2,123.02 |

This calculates to an hourly production cost of : Kg CO₂e

Previous

Save

Close

Complete Mode

To capture the exact carbon costs for your manufactured items, you would use full capture mode. This mode allows you to enter further information, as detailed below.

- Enter fuel usage and type against your production machinery.
- Enter details of your vehicle fleet, including annual mileage, fuel type and emissions data.
- Carbon Overheads – enter your business fuel bills (Gas/Electricity etc) into Cim50. The system will then calculate what portion of those bills are overheads based on the production output of your system over that time period.

Along with the carbon footprint of your purchased items, as detailed from your suppliers, Cim50 will provide you with an accurate carbon cost for your finished goods.

Reporting Carbon Usage

A new dashboard has been added to Cim50, which allows you to see your carbon footprint on a monthly basis.

This dashboard highlights which products have the highest carbon footprint, what machinery and vehicles are costing you the most, and allows you to make informed decisions to help reduce your carbon footprint.

In addition, there are numerous reports available throughout Cim50 giving insight into your carbon usage.



Offset your Carbon Usage

You can offset carbon usage by funding carbon offsetting projects or via purchasing renewable energy credits located in the UK and Europe.

Choose to give your customer the option of offsetting the carbon usage for the items they're purchasing or offset it on their behalf and share the good news with them.

manufacturing
software...

...for Sage 50

Cim50

manufacturing

If you are interested in finding out more,
please contact us on **02382 02 69 69** or email
enquiries@cim-software.co.uk.



© Cim50 by CIM Software Ltd.

Park House, Franconia Drive, Nursling Industrial Estate, Southampton, SO16 0YW.
02382 02 69 69 | enquiries@cim-software.co.uk | www.cim-software.co.uk