



Cim50 v2024 Release Notes

The latest release of Cim50, version 2024 is here.

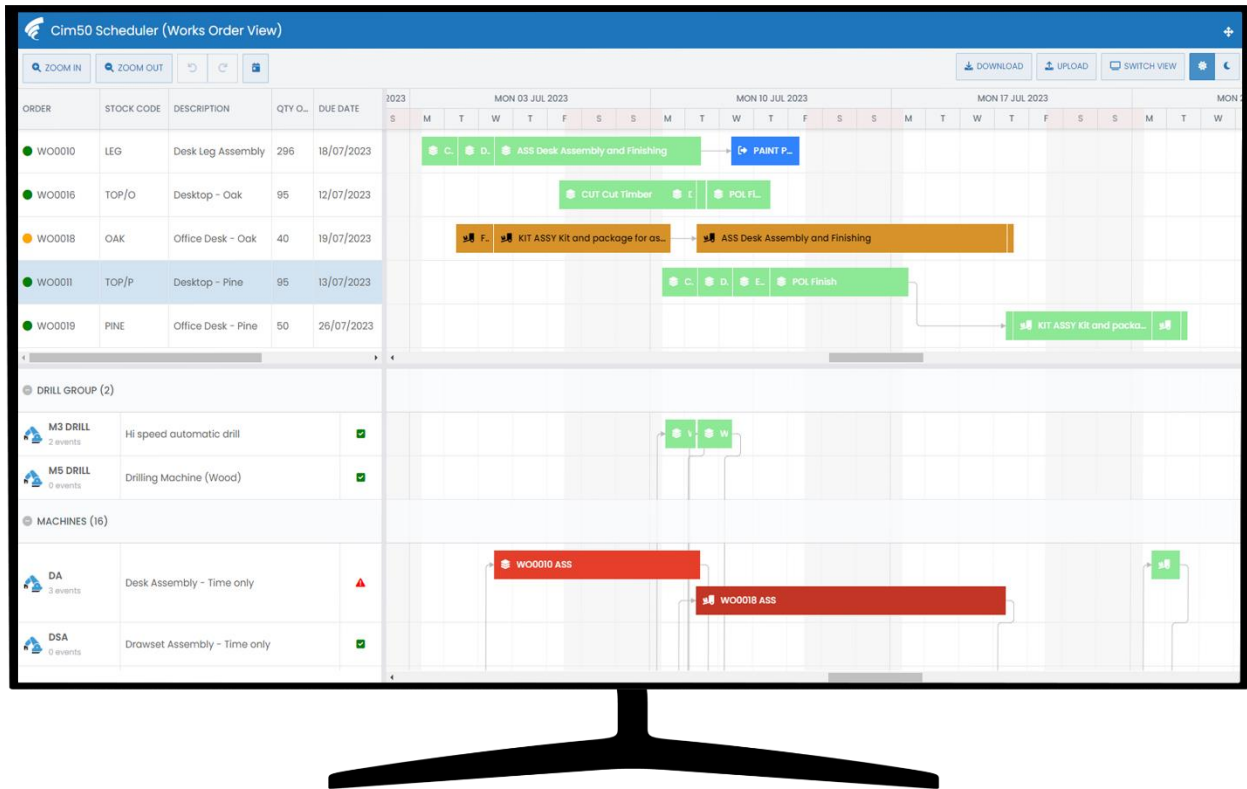
This release of Cim50 is [compatible with Sage 50cloud Accounts v29, v29.1 and v29.2](#). This release contains our much-anticipated Cim50 Scheduler module, along with 20+ of the most requested wishes and minor user experience improvements.

The release also includes resolutions for any bugs logged since the release of our Cim50 v2023.2 version.

Note: This version of Cim50 is only compatible with Sage 50 Accounts v29/v29.1/v29.2. Please ensure you upgrade your Sage 50 Accounts software at the same time as installing this update.

Cim50 Scheduler

Visualise your production schedule and control your shopfloor workload with our intuitive and easy to use interface.



Utilise Your Resources

Group your resources and schedule production based on the capacity and availability of labour resources, machine resources or both.

Easily Control Your Production

Easily see shopfloor only workload and take control of your production plan to improve your manufacturing efficiency.

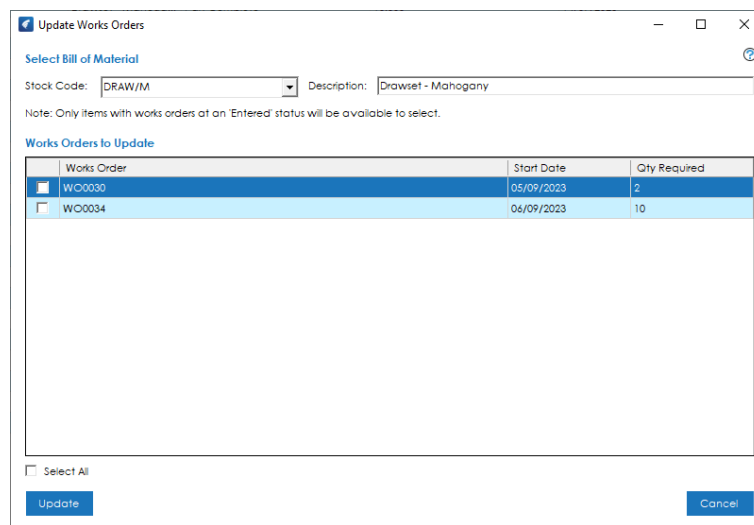
Prevent Resource Conflicts

Predict and resolve future resource conflicts and overloads to optimise the production plan to meet customer demands.

Update Live Works Orders

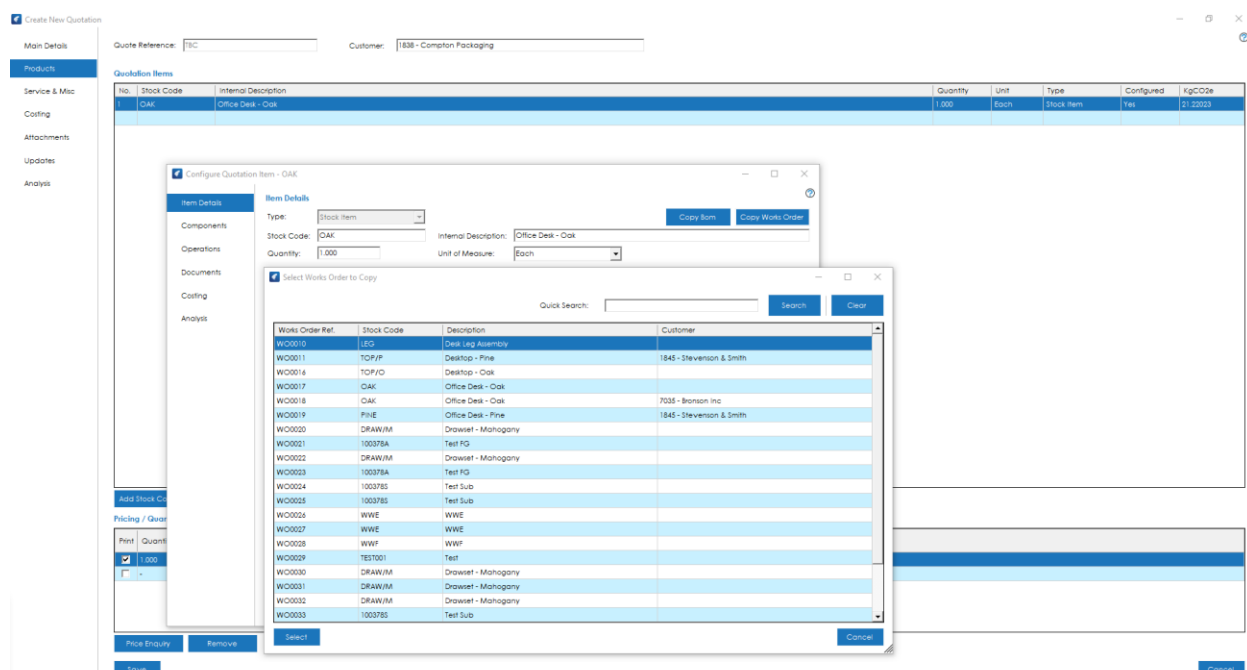
Quickly update live works orders with recent changes made on associated Bills of Materials.

We have added the ability to selectively update works orders which are at an Entered status, reloading Components, Operations, Documents and Manufacturing Instructions from the relevant Bill of Material associated with the Works Order.



Configure Quotations based on Works Orders

We have added the ability to configure a quotation item based on the components, operations and documents defined on a Works Order. This includes configuring quotation items from stock or non-stock works orders.



Minor Changes

Cim50 v2024 includes the following minor changes/improvements

Module	Change Notes
All Modules	Traceable processing screens now show a “Qty Remaining” field, showing how many more are needed to be allocated/issued/defined etc.
Installation	Barcode fonts used on standard Cim50 document layouts are now installed by default.
Bill of Materials	Resource registers now include quick search functionality.
Bill of Materials	Added the ability to print labels when processing a BOM build, based on the stock record label printing settings as per Works Order completions.
Bill of Materials	When trial kitting a BOM, should the user choose to process a BOM Build from the Trial Kit, the build quantity will be based on the Trial Kit quantity, rather than the BOM default build quantity.
Planning	Added the ability to delete cancelled or completed Make for Stock records.
Planning	Supplier currency is now visible when amending/viewing MRP recommendations.
Stock Control	Users can now define which columns to display within the Delivery Notes list, with the ability to display additional columns added to the delivery notes views. Note: The delivery note views are recreated to accommodate this change. Any customisation made to existing delivery note views will be lost.
Stock Control	Supplier currency is now visible when viewing stock record suppliers.
Stock Control	Improvements made to Quarantine Inspection screens, making Batch/Serial Number information more pertinent, and giving users the ability to open the associated batch/serial number record to access documents or any other relevant information.
Stock Control	Added the ability to delete a Unit of Measure if it is not in use.
Stock Control	Added the Stock Description to the stock take enter count screen.
Stock Control	Stock Profile Projections can now be exported to Excel for manual manipulation as required.
Stock Control	Added the ability to print multiple delivery notes simultaneously, depending on delivery note settings to capture additional delivery information or not. Note: The standard delivery note layout has been updated to accommodate this change in functionality. Custom delivery note layouts will need to be updated to accommodate this change.
Stock Control	Part quarantining a batch now splits the batch so that the location of the non-quarantined portion of the batch shows the original location, rather than “Quarantine”.
SFDC	Added the “Location” field from the associated stock record to the SFDC Allocate/Issue Works Order screens.
Works Orders	Added the ability to cancel multiple Works Orders simultaneously.

Works Orders Automatic operation booking processed during Works Order completion now only book enough to cover the completion taking place, rather than the entire outstanding amount.

Works Orders The works order reference is now displayed when choosing a subcontract despatch/receipt note to re-print.

Bug Fixes

Cim50 v2024 resolves the following bugs/issues reported.

Module	Change Notes
Bill of Materials	Resolved an issue where the Provision Traceable Numbers flag can be cleared when importing BOMs in certain scenarios.
Bill of Materials	Resolved an issue where the import process will throw an error when a random blank line is placed in amongst the import data.
Bill of Materials	Resolved an issue when attempting to search for a BOM to delete within the Delete BOM Screen before the list has finished populating.
Bill of Materials	Resolved an issue where selecting multiple components simultaneously in the Add Components screen and pressing 'Save & Close' will result in the components being added to the BOM in the opposite order they are listed in the Add Components screen.
Bill of Materials	Resolved an issue where users were able to raise BOM Builds and Works Orders for Kit BOMs
Planning	Resolved an issue where MRP will incorrectly tag firm linked sub-assembly works orders to the same demand line when the parent works order contains duplicate sub-assembly items.
Quotations	Resolved an issue where entering an apostrophe into an analysis field causes an error when saving a new quotation.
Quotations	Resolved an issue where Quotation Item Analysis Values were not displayed when viewing a quotation item configuration.
Quotations	Resolved an issue where the labour times/costs are lost when copying a quotation and clicking into the labour reference field.
Quotations	Inactive customers are now no longer selectable when raising a new quotation.
SFDC	Resolved an issue where the suggested issue quantity when issuing traceable stock to a works order can be incorrect in certain scenarios.
SFDC	Resolved an issue where the system would warn of an over-issue for serial numbered items incorrectly.
SFDC	Resolved an issue where transferring a split batch back to its original location does not merge the batches together as it does within the main Cim50 UI.
SFDC	Resolved an issue where the user is presented with locations to transfer traceable stock from where there is no stock still available in that location.
Stock Control	Resolved an issue accessing the Stock Profile History screen for traceable items which have previously had a prove balance error corrected.
Stock Control	Resolved an issue accessing the Stock Profile History screen for traceable items which have previously had a prove balance error corrected.
Works Orders	Resolved an issue that occurred when trying to create a works order containing a phantom sub-assembly which contains an operation with a quantity per run of 0.

Works Orders Resolved an issue where you are unable to add further links to a works order when there should be a quantity available to link, instead showing a negative quantity available in certain circumstances.

Works Orders Resolved an issue where backflushing a component which uses an alternate unit of measure can result in the system calculating that there is not enough stock to backflush when there is.