



Cim200 v2025 R2 Release Notes

The latest release of Cim200, v2025 R2 is here.

This release of Cim200 is **compatible with Sage 200 Professional v2022 R2 onwards**. This release contains a number of exciting new features, along with bug fixes for issues logged since the release of Cim200 v2024 R1 SP4.

Release Date: 31st October 2025

Add-on Version Number: 2025.00.02.100

Cim200 Commercials – Stock Obsolescence Control

Proactively manage and phase out obsolete stock with automated MRP-driven obsolescence control.

Amend Stock Item Details

Cim200 v2025 R2 New Features

Stock Item

Code: CA/BASE/SNG/BEECH Name: Beech Base Single Cabinet H58cm

Details Manufacturing & Planning Alerts Audit Log Commercials Customer Part Numbers Quality Control By-Products Analysis Suppliers Alt

Quarantine

Quarantine:

PO Goods Receipt: WO Completion:

BOM Build: Sales Returns:

Partial Inspection Type: None

Full receipt rejection

Obsolescence Control

Supersedes: ABBuiltin/16/1/2 Edit...

Superseded By: ABBuiltin/16/21/2 Edit...

Mark Obsolete

Planned Obsolescence Date: 31/12/2025

Product Image

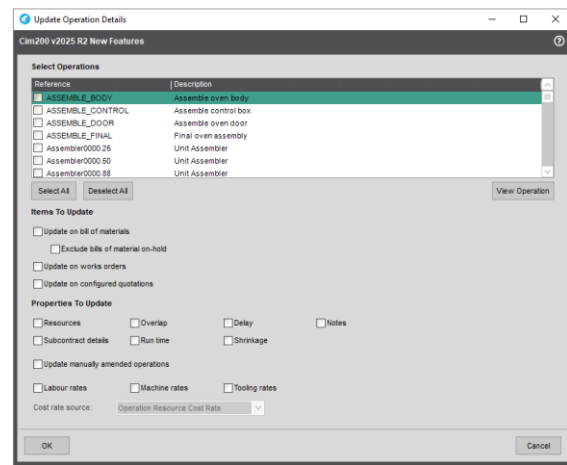
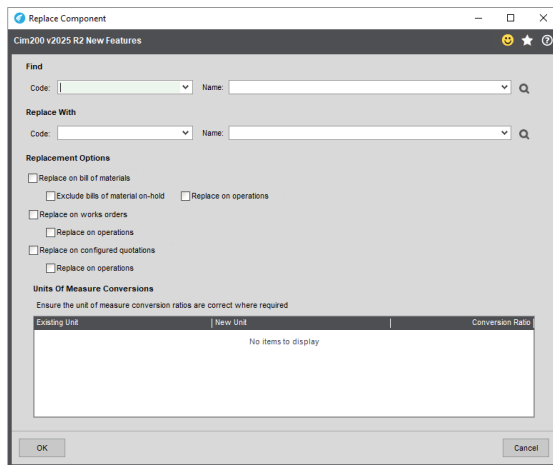
A new **Stock Obsolescence Control** feature has been introduced, providing clear visibility and management of items planned for obsolescence or already phased out. The screen separates items into those with **future planned obsolescence** and those already obsolete, with tools to replace obsolete components across BOMs and Works Orders when a superseding item exists.

MRP fully respects obsolescence rules, consuming existing stock and planned replenishments up to the obsolescence date and automatically switching demand to the replacement item where defined. Recommendations beyond the obsolescence point are blocked, helping prevent accidental purchasing or production of obsolete stock.

This functionality supports controlled phase-outs, structured engineering change processes, and improved lifecycle management for stocked components.

Cim200 Bill of Materials – Component/Operation Tools

Quickly update Bills of Materials and Cim200 Works Orders with our new Component and Operation Tools screens.



Streamline Bill of Material, Works Order and Configured Quotation Updates with our new operation and component tools.

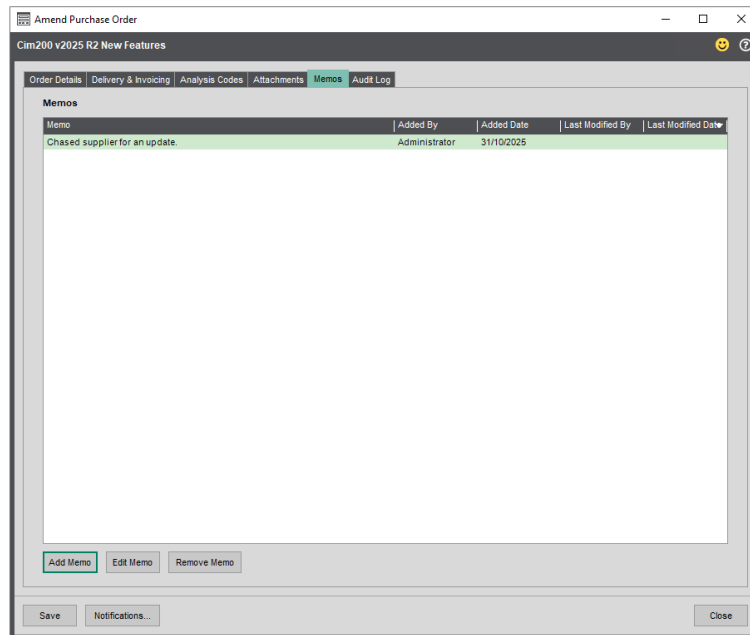
A new suite of **Component & Operation Tools** has been introduced to streamline bulk maintenance across Bills of Materials, Works Orders, and Configured Quotations. These tools allow users to quickly **add, replace, remove, and update** components and operations across multiple records in one process, reducing manual effort and ensuring data consistency throughout the system.

Users can search and select items to update, apply filters to target only the required records, and optionally re-cost the affected BOMs and Works Orders as part of the process. Version-controlled BOMs are fully supported, with updates applied to **active and new versions** only. Comprehensive audit logging has been included to provide full traceability of changes.

This enhancement brings significant efficiency improvements to engineering change management, making it easier to roll out component or operation revisions, remove obsolete items, or update runtime and cost parameters in bulk.

Cim200 Commercials – Purchase Order Memos

Record notes and memos against purchase orders.

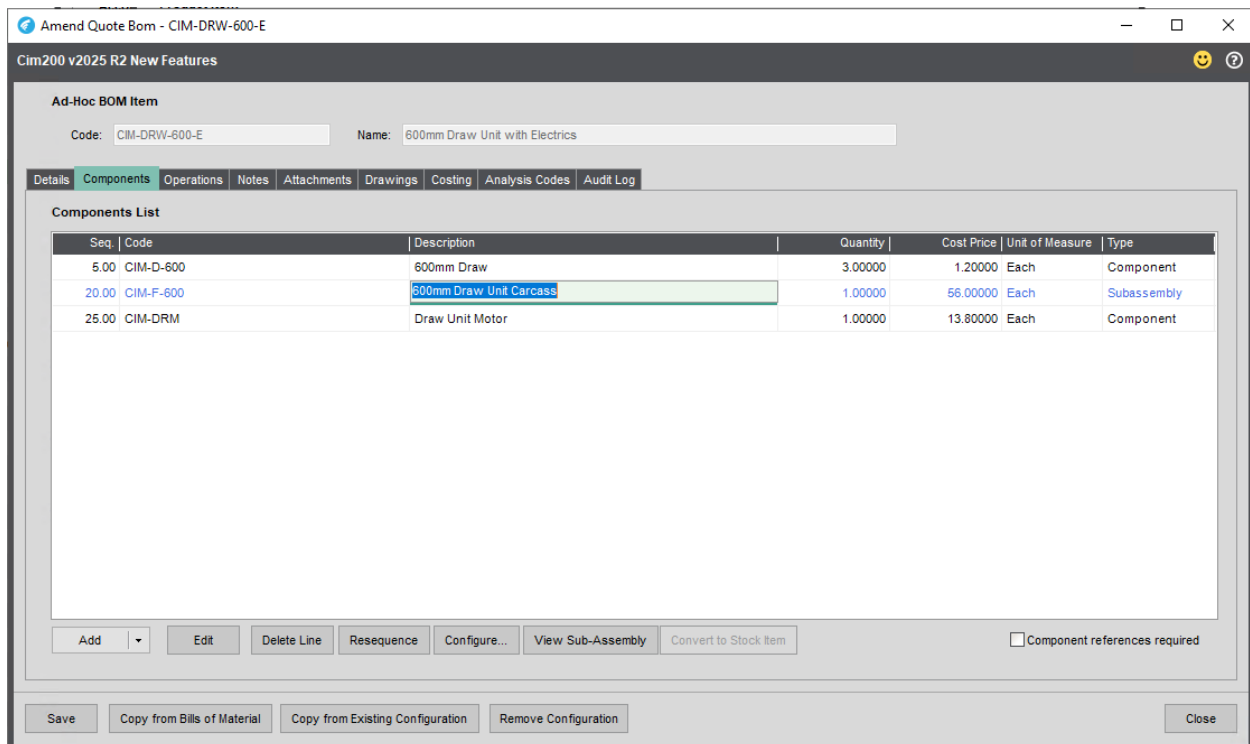


Purchase Orders now support **memos**, allowing users to record internal notes and supplementary information directly against the order. Memos can be added, viewed, and maintained throughout the PO lifecycle, providing a clear audit trail of communication, decisions, and context without affecting supplier-facing documents.

This enhancement improves internal collaboration and traceability by ensuring key details, reminders, and operational notes are stored centrally with the purchase record rather than being held externally or in free-text comments.

Cim200 Commercials – Multi Level Quotation Configuration

Introducing the ability to build and cost custom multi-level bills of material for a specific quotation.



Cim200 now supports **multi-level quotation configurations**, allowing configured products to include sub-assemblies and nested configurable structures.

This enhancement enables more complex product build-ups to be costed, configured, and quoted accurately, ideal for businesses supplying modular or configurable systems.

Users can configure each level independently, with full support for inherited options, component overrides, and downstream cost roll-up. Quotation pricing, lead times, and resource requirements are calculated across all configurable levels, providing a complete and accurate quotation for complex manufacturing solutions.

This development significantly extends configuration flexibility, reduces manual engineering intervention, and ensures consistent and scalable configuration processes across sales and production environments

Cim200 Commercials Enhancements – Purchase Unit of Measure

Define a default purchase unit of measure for use when raising purchase orders, either manually or via MRP.

The screenshot displays the 'Edit Supply Details' window for stock item ABCookHoods/22/2. The window is titled 'Cim200 v2025 R2 New Features' and includes a close button (X) and a help icon (?). The form is organized into two main sections: 'Supplier' and 'Supply Details'.
Supplier Section:
- Code: ABC001 (dropdown)
- Short name: ABCooker (dropdown)
- Postcode: BL1 1FT (dropdown)
Supply Details Section:
- Supplier stock code: ABCH (text input)
- Lead time: 7 Days (text input and dropdown)
- Usual order quantity: 12.00000 (text input)
- Minimum order quantity: 6.00000 (text input)
- Default buying unit: (dropdown)
- KgCO2e (per Each): 0.00000 (text input)
- A checkbox labeled 'Use stocking unit as default buying unit (Each)' is checked.

A new **Purchase Unit of Measure (UOM)** feature has been introduced, allowing users to define the unit in which each stock item is purchased from each supplier. Purchase recommendations, purchase orders, trial kitting, and MRP now automatically convert and suggest quantities using the supplier's defined purchase UOM, ensuring accurate order quantities and improved alignment with supplier packaging and pricing structures.

Existing supplier records default to the item's standard UOM, and users are prompted where price breaks or list prices may need review when changing UOMs. Full integration throughout purchasing, MRP, and planning ensures consistent unit handling, clearer buying visibility, and reduced manual conversion effort when ordering from suppliers who supply in cartons, packs, reels, or other alternative units.

Cim200 Production Enhancements – Machine/Tool Service & Maintenance

Define machine and tool service and calibration schedules and have the system recommend when maintenance will be due.

The screenshot displays the 'Amend Machine Resource Record - Assembly Machine A' window. The window title is 'Amend Machine Resource Record - Assembly Machine A' and the version is 'Cim200 v2025 R2 New Features'. The main content area is divided into several sections:

- Machine Resource:** Reference: Assembly Machine A, Description: Assembly Machine A.
- General:** Group: Assembly Machines, Cost heading: Machine, Cost rate: 15.00000, Allow cost rate override: , Location: (empty), Dimensions: (empty), O/Head recovery %: 0.00, Efficiency %: 100.00, Nominal code: 44106 (Machine Costs), Overhead nominal code: 51700 (Machine Overhead Absorption).
- Maintenance:** Full service hours: 0, Ordinary service hours: 0, Service interval: 12 Months, Calibration interval: 1000 Hours, Service time period method: Calendar Time, Calibration time period method: Runtime, Replenishment horizon days: 0.

Cim200 now automatically identifies and schedules **machine and tool maintenance or calibration** requirements as part of the MRP process. The system tracks usage, elapsed time, and expected workload against each resource's service interval, generating recommendations when maintenance is due or forecast to fall due within the planning horizon.

From the new **Service/Maintenance Recommendations** list, users can review upcoming or overdue maintenance and convert recommendations into **ad-hoc downtime bookings** with a single action, ensuring maintenance time is reserved in the production schedule. This enhancement improves equipment reliability, supports compliance requirements, and helps prevent unplanned downtime by integrating maintenance planning directly into the MRP workflow.

Minor Changes

Cim200 v2025 R1 includes the following minor changes/improvements

| Module | Change Notes |
|---------------|---|
| Planning | Subcontract purchase recommendations have now been included in the main MRP Recommendations list view. Showing you when you need to raise orders for subcontract operations. |
| Planning | You can now exclude any warehouse from the Demand Schedule and MRP planning processes, rather than just those locations flagged as Quarantine locations. |
| Stock Control | Improvements have been made in the Rapid Entry Transaction screens, making it easier to find the relevant Warehouse/Bin you want when adding, transferring or writing off stock. |
| Stock Control | Two new Quality Inspection reports have been added to the system. |
| Stock Control | Alerts functionality extended. You can now raise alerts for items when despatching goods, receiving goods from sales returns, and when completing works orders. |
| Works Orders | Allocate Stock by Stock Item functionality has been added. This replicates the Issue Stock by Stock Item functionality but for allocations. |
| Works Orders | Base Item completion improvements. A new setting has been added to streamline Base Item completions, with an option to now only display the expected output items by default, rather than all potential output items. |
| Works Orders | You can now export actual cost breakdown information to Excel. |
| Works Orders | You can now set Works Orders to Ignore Warehouse Hierarchy, forcing component stock to be allocated and/or issued from the Works Order completion warehouse. |
| Works Orders | The 'As much as possible' functionality available when issuing stock is now available when reverse issuing stock. |

Bug Fixes

Cim200 v2025 R2 resolves the following bugs/issues reported.

| Module | Change Notes |
|-------------------|--|
| Bill of Materials | Resolved an issue where operation components could be duplicated when using multiple routes. |

| | |
|-------------------|--|
| Bill of Materials | Resolved an issue where component deletions on a component list were not being reflected on the standard Sage 200 components list in certain scenarios. |
| Bill of Materials | Added a user-friendly message when trying to import an Excel spreadsheet using the Cim200 imports on a system without Excel installed. |
| Bill of Materials | Resolved an issue where analysis code labels would not appear correctly in certain scenarios on operations. |
| Commercials | Resolved an issue where unit cost could be cleared out when configuring quotation items in certain scenarios. |
| Commercials | Added order status changes to the POP and SOP auditing. |
| Planning | Resolved an issue where a recommendation could be amended after it had been actioned. |
| SFDC | Added the ability to choose which bin to issue stock from when issuing works orders. |
| SFDC | Added the stock code and description to the operations list when selecting an operation to log on to. |
| SFDC | Resolved an issue where the quantity completed would be incorrect when completing a works order short. |
| SFDC | Resolved an issue where traceable items that are not available to be issued or not on the works order would appear when scanning traceable items to issue. |
| SFDC | Resolved an issue when issuing components where there was no visibility of the quantity already issued to the works order. |
| SFDC | Resolved an error when trying to backflush more than free stock will allow on works order completion. |
| Stock Control | Resolved an issue that prevented the goods in transit warehouse being removed from a stock item after goods in transit had been disabled. |
| Stock Control | Resolved an issue where supplier price breaks on stock item suppliers were not saving correctly for new suppliers. |
| Stock Control | Resolved an issue loading pro-forma invoices from stock profile. |
| Stock Control | Resolved an issue where a unit of measure could be removed from a stock item when it is in use on a works order component. |
| Works Orders | Fixed an issue where subcontract orders could be created incorrectly when multiple orders are raised at the same time with separate orders are raised per operation. |
| Works Orders | Resolved an issue where allocating / issuing as much as possible could cause a stock item's level to drop below zero if the stock item is on a works order multiple times. |
| Works Orders | Resolved an issue where catch-up postings could incorrectly end up in current waiting postings on works order closure. |
| Works Orders | Resolved an error when loading multiple works orders into the closure screen and sorting the grid. |
| Works Orders | Resolved an issue where viewing a closed works order could still show a quantity outstanding if it was completed short. |
| Works Orders | Resolved an issue where the resource id would not always be saved when booking time on an operation. |

| | |
|--------------|---|
| Works Orders | Resolved an issue where a resource could not be selected when adding a new operation to a timesheet, on timesheet entry, with 'Allow Operation Resource Selection' enabled. |
| Works Orders | Resolved an issue where cancelling a subcontract purchase order was not updating the subcontract operation correctly. |
| Works Orders | Resolved an issue where phantom component costs were doubling on works order costing in certain scenarios. |
| Works Orders | Resolved an issue where bulk issue components were being incorrectly consumed and free stock against them checked when backflushing components on works order completion. |
| Works Orders | Resolved an issue where backflushing base items would prompt for all traceable components if 'Auto Pick on Issue' was enabled. |
| Works Orders | Added a button to remove all works order that are marked as 'Unable to Close' on the close works order screen. |